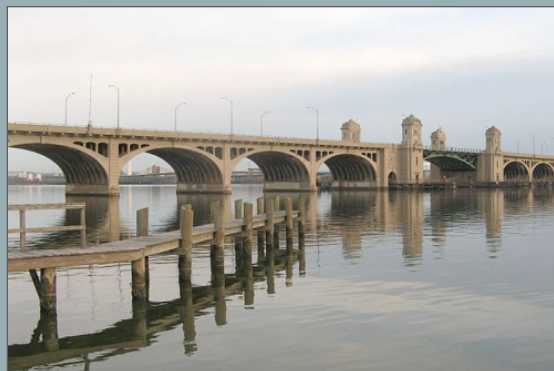


**MIDDLE BRANCH PARK** is made up of 150 acres of rolling parklands, which feature fishing piers, boat ramps, picnic areas and wetlands, and since 1987, the exquisite Baltimore Rowing Club and Water Resource Center. The view from Middle Branch Park is spectacular.



**REEDBIRD and CHERRY HILL PARKS** are made up of wide-open fields used by all manner of sports teams and age groups, and include the Cherry Hill Splash Park, which offers the public a chance to escape the summer heat at the city's large and refreshing park pool.



Your support can make a difference!  
Park Walk Middle Branch was developed and designed to protect and promote this vital waterfront while helping put the City of Baltimore and the surrounding communities back in touch with the beauty and care of the Middle Branch Harbor that is their home.

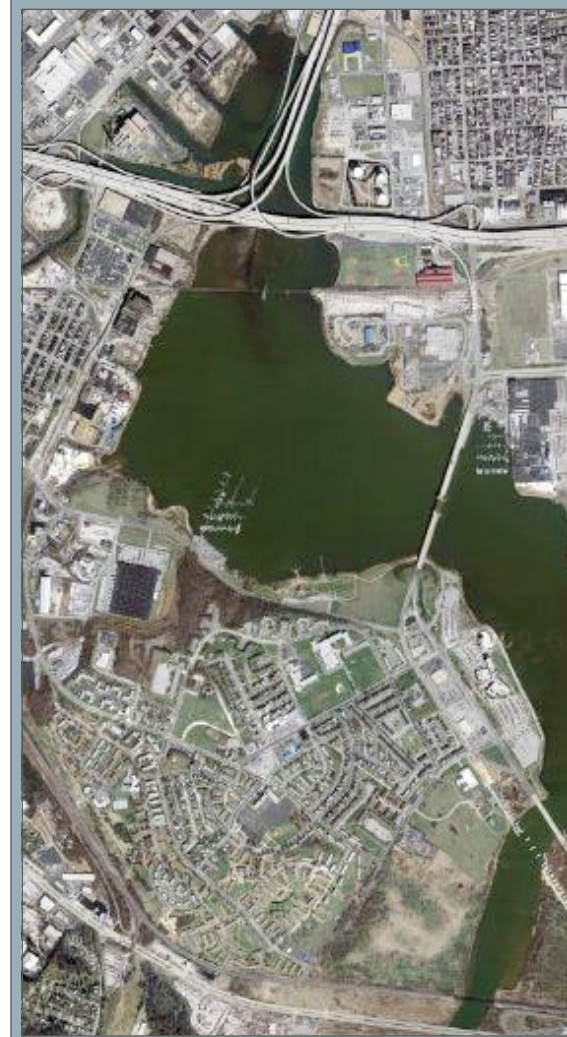
#### WHAT YOU CAN DO

- Provide new funds for parks by shopping online at [www.parkwalkamerica.com](http://www.parkwalkamerica.com)
- Use For Your Health to protect your health, become better educated, and to locate the health care providers and resources you need.
- Get more active and choose from the many approaches on For Your Fitness.
- Become more involved in protecting and sustaining the environment

This display space can be purchased by businesses or organizations for marketing and promotional purposes. Custom local marketing campaigns can be developed.

Email us at: [parkwalkamerica@earthlink.net](mailto:parkwalkamerica@earthlink.net)

ABC Ventures  
P. O. Box 19776, Baltimore, MD 21224.



#### PARK WALK MIDDLE BRANCH...

Park Walk Baltimore is the pilot market for Park Walk America, [www.parkwalkamerica.com](http://www.parkwalkamerica.com), a new, innovative, interactive project that provides a new source of funding for parks while promoting better health, better fitness, and a better environment. Park Walk Baltimore will be followed by Park Walk cities and states across the country.

# Park Walk Middle Branch

## PARK WALK SHOPPING

The Park Walk Shopping site includes a variety of national and local merchants and many of America's leading retailers. Supporters will be able to buy the best products and services - music, home entertainment, clothing, health and beauty aids, athletic gear and equipment, computer hardware and software, gardening supplies and even pet products and parts for cars and trucks - all at the same prices while helping parks and the environment. Some of the top merchants include Advanced Auto, Amazon, Barnes and Noble, Expedia, Enterprise, Macy's, and Walmart. A portion of every purchase will support local and national parks and recreational areas. Shop now at [www.parkwalkamerica.com](http://www.parkwalkamerica.com) and make a difference.

*Our goal is to pass on to our children and our children's children a world that is as good as, if not better than, the one we enjoy today.*

## FOR YOUR HEALTH

This facet of the program is the trail to better health through providing the highest quality health and medical information, guides to better medical access, and the ability to find the health care providers that can deliver the quality of service people need. You can check your prescriptions and ask questions. Get the answers you need to take the necessary action to get the results you want.

## FOR YOUR FITNESS

Personal fitness is a key component of a high quality of life. For Your Fitness will be a comprehensive guide to the people, places, and things that can help you become more fit. From home exercising to health clubs to walking, to swimming, there will be something for everybody. A fitness products catalogue is included, which supports parks and recreational areas with every purchase.

## FOR A GREENER ENVIRONMENT

Promoting sustainability and protecting the environment are primary goals of Park Walk Middle Branch. The objective is to meet the current environmental, social, and economic needs of the Middle Branch community and the City of Baltimore without compromising the ability of future generations to meet those needs as well. For a Greener Environment will contain action plans, guides on green employment and financial resources to meet sustainability and environmental goals.



## PARKS

*Parks are the common ground we all enjoy to relax, reflect, and recreate. They are central to the well-being of communities and people. Park Walk Middle Branch is part of a national initiative, Park Walk America, that leverages modern technology, the vast resources of the Internet and the billions of everyday dollars we spend, into better health, better fitness, and a better environment.*

